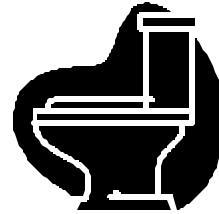


FAX UPDATE

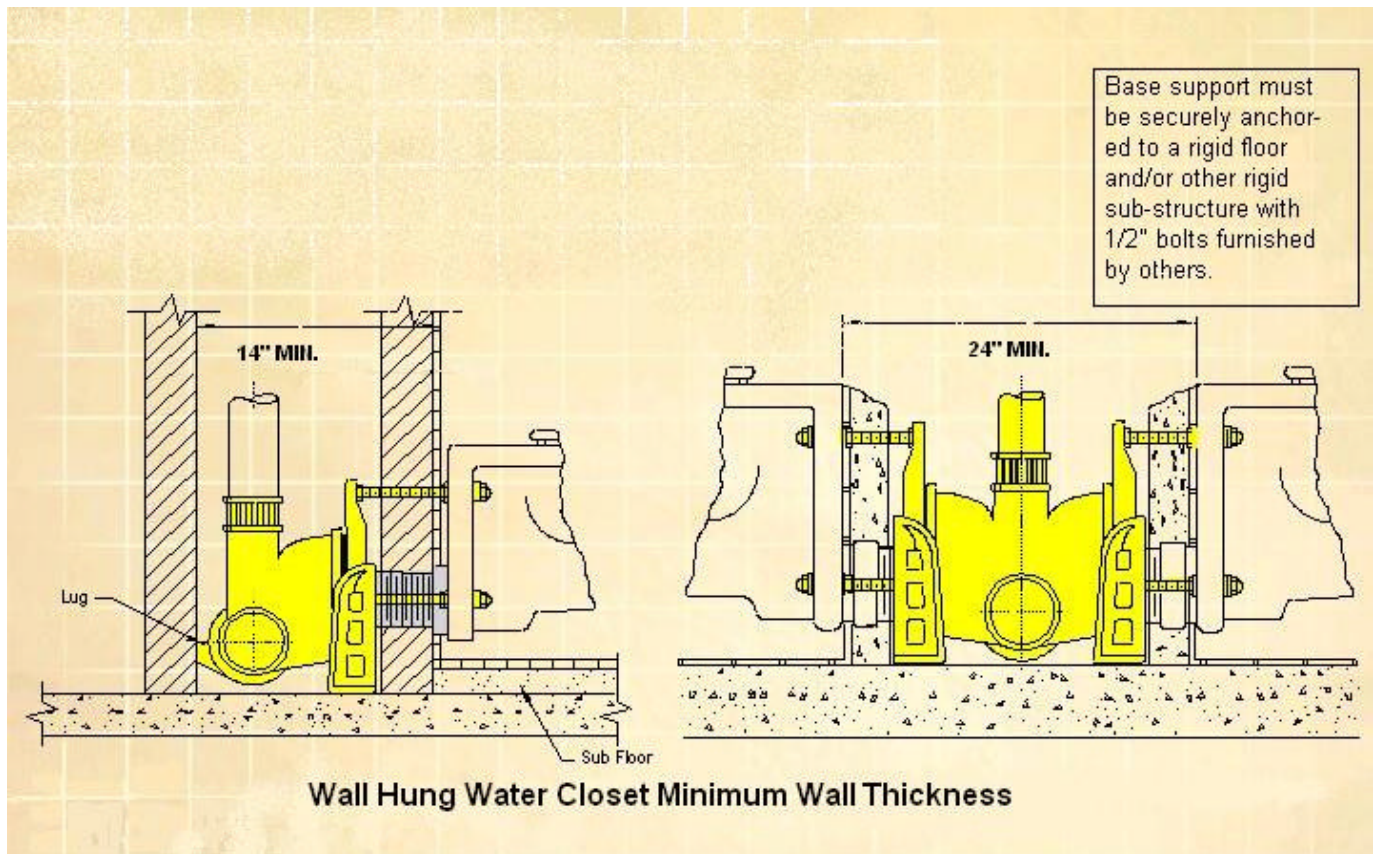
Plumbing Chase Dimensions – Wall Hung Water Closets

By: Chris Wright



February 20, 2003

Plumbing chase dimensions for wall hung closets are shown below. These Dimensions are minimum dimensions for the installation of standard commercially available water closet carriers. These carriers are designed to carry up to 300 lbs.



In special situations the dimensions shown above may be increased. For example:

- **Park Restrooms** - often the flush valve is concealed in the plumbing chase and access to these valves is required. In these situations the plumbing chase is often up to 42" clear inside dimension.
- **Concrete Masonry Unit (CMU) Construction** - Due to the thickness of the CMU blocks the plumbing chase may have to be widened to allow the installation of the carrier.
- **Near Back to Back Installation** - If water closets are not truly back to back and are offset by less than 24" the plumbing chase dimension will increase from the 24" to 30".

For More Information on This Subject Contact:

RICE Group, Inc
p. (425) 774-3829
f. (425) 672-2084
19015 36th Ave, W, Suite A
Lynnwood, WA 98036